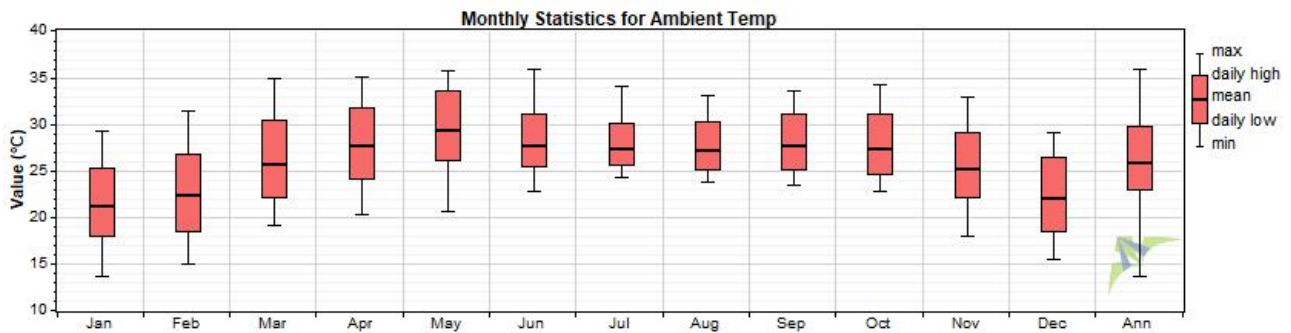


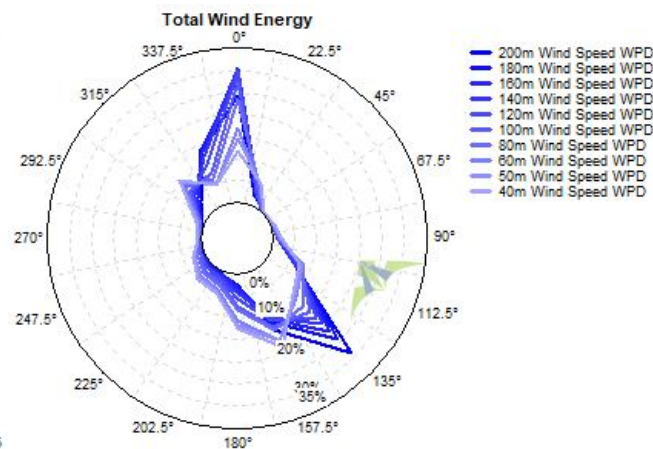
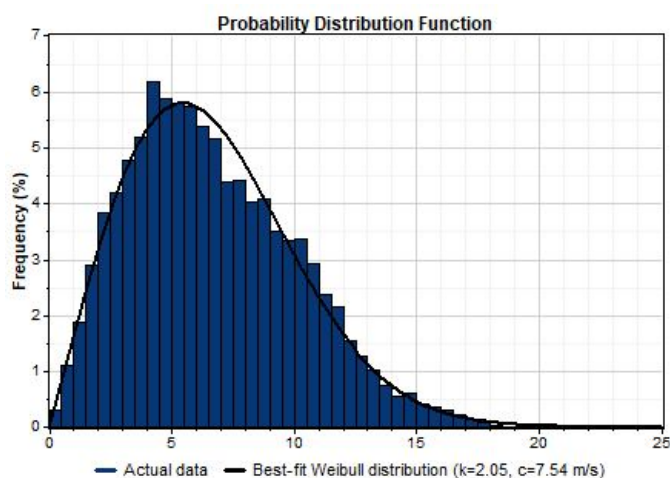
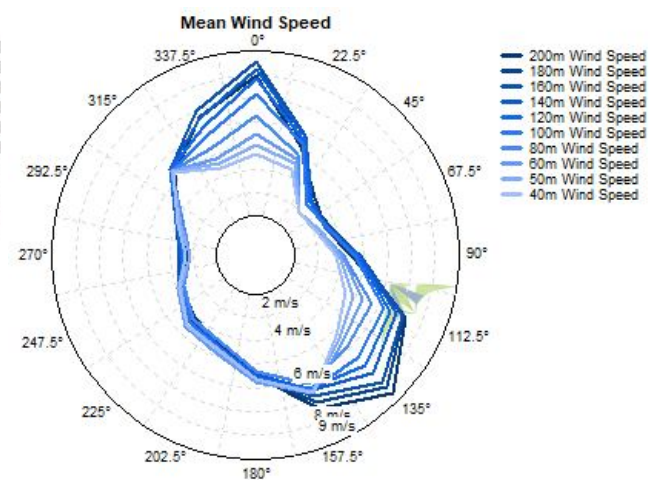
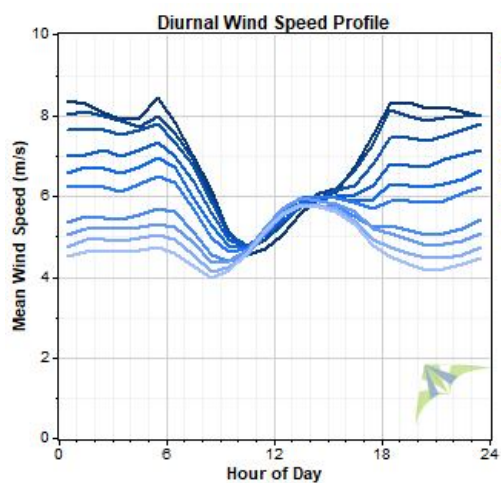
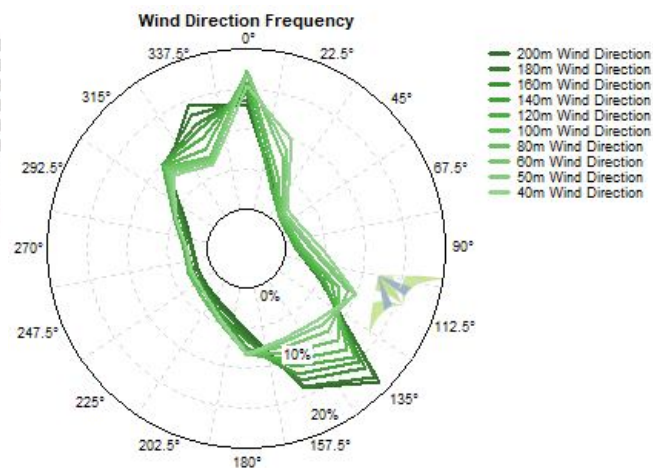
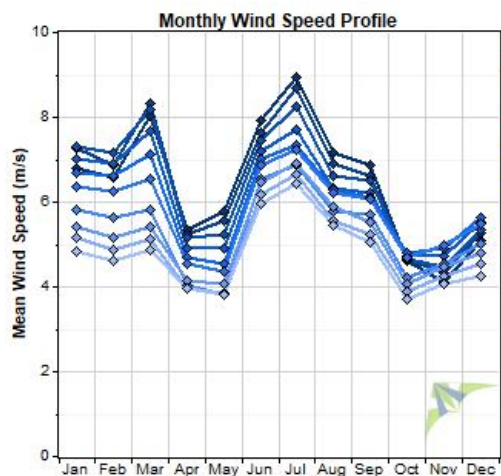
Data Set Properties

Report Created: 4/11/2018 10:40 using Windographer 3.3.10
 Filter Settings: <Unflagged data>

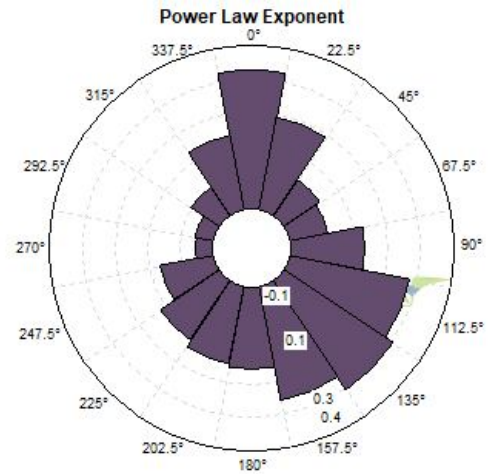
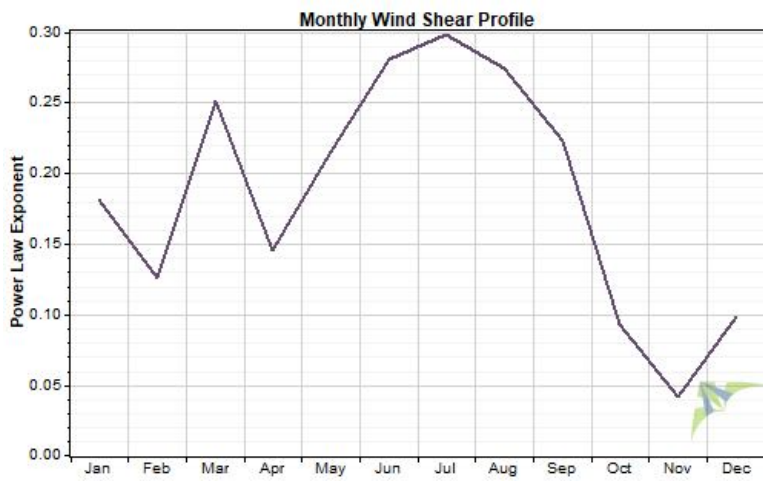
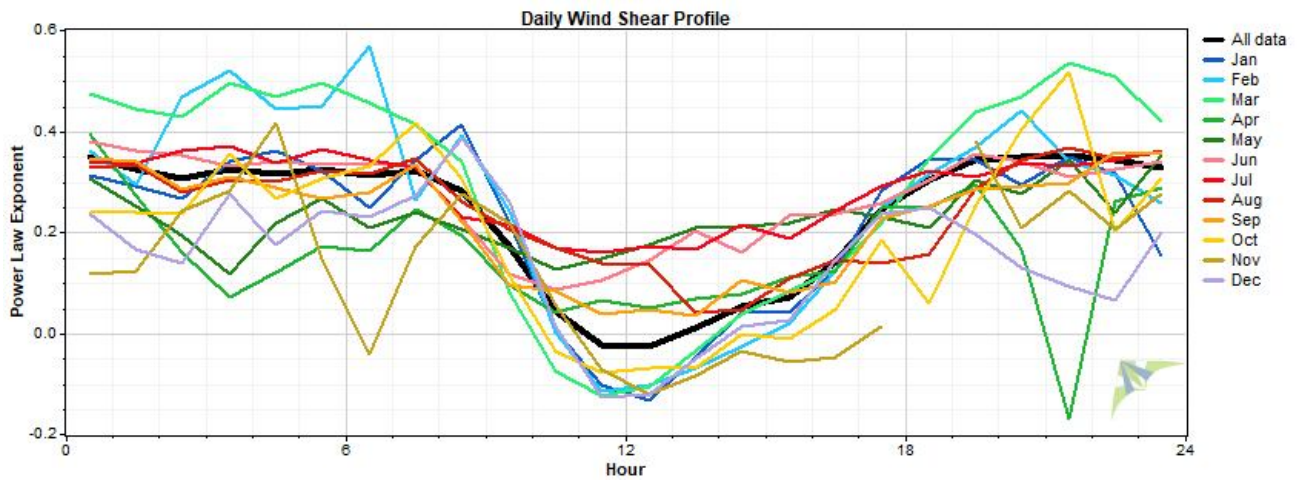
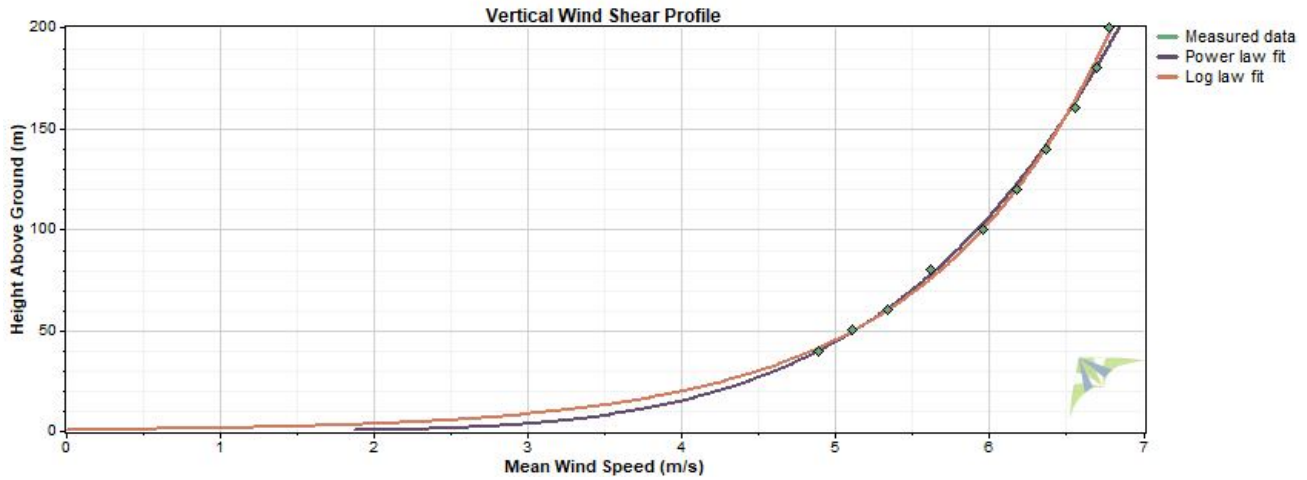
Variable	Value
Latitude	N 21° 8' 50.352"
Longitude	E 92° 4' 32.700"
Elevation	14 m
Start date	7/25/2014 13:30
End date	8/2/2015 10:30
Duration	12 months
Length of time step	10 minutes
Calm threshold	0 m/s
Mean temperature	26.0 °C
Mean pressure	1,009 mbar
Mean air density	1.177 kg/m ³
Power density at 50m	120 W/m ²
Wind power class	1
Power law exponent	0.209
Surface roughness	0.739 m
Roughness class	3.66



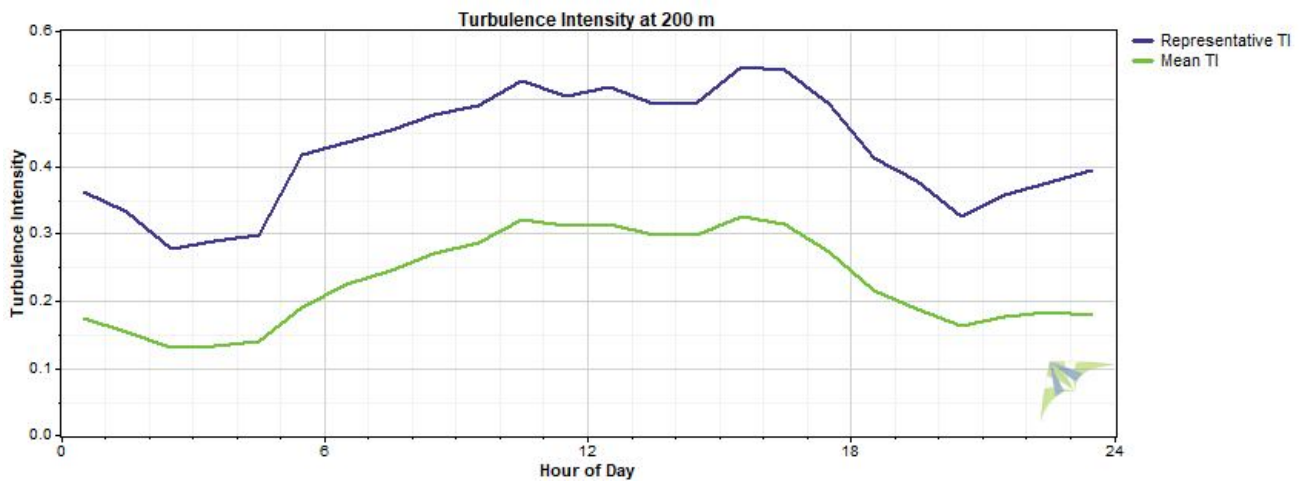
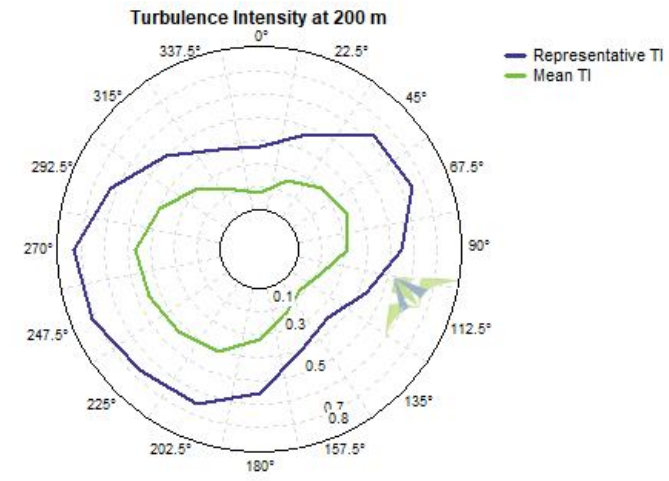
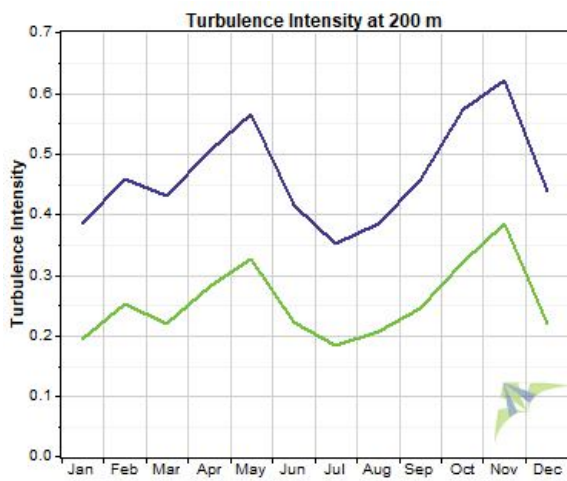
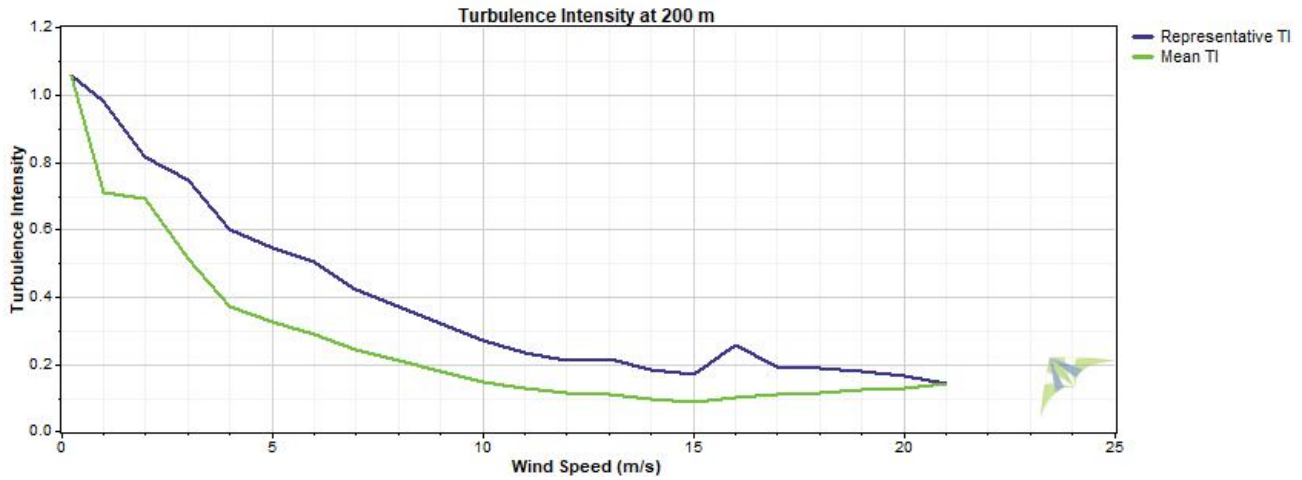
Wind Speed and Direction



Wind Shear



Turbulence Intensity



Data Column Properties

#	Label	Units	Height	Possible Data Points	Valid Data Points	Recovery Rate (%)	Mean	Min	Max	Std. Dev
1	40m Wind Direction	°	40 m	53,694	50,865	94.73	66.7	0.0	360.0	114.6
2	40m Wind Speed	m/s	40 m	53,694	50,865	94.73	4.713	0.070	17.730	2.210
3	40m Wind Vert	m/s	40 m	53,694	50,865	94.73	-0.278	-9.050	0.500	1.087
4	Quality (Station Height 40m)	%		53,694	51,077	95.13	98.2	90.0	100.0	1.2
5	50m Wind Direction	°	50 m	53,694	50,348	93.77	59.6	0.0	360.0	114.8
6	50m Wind Speed	m/s	50 m	53,694	50,348	93.77	4.902	0.020	20.010	2.297
7	50m Wind Vert	m/s	50 m	53,694	50,348	93.77	-0.278	-8.970	0.500	1.080
8	Quality (Station Height 50m)	%		53,694	50,760	94.54	98.1	90.0	100.0	1.4
9	60m Wind Direction	°	60 m	53,694	49,795	92.74	57.9	0.0	360.0	114.3
10	60m Wind Speed	m/s	60 m	53,694	49,795	92.74	5.148	0.030	19.790	2.402
11	60m Wind Vert	m/s	60 m	53,694	49,795	92.74	-0.274	-8.950	0.500	1.065
12	Quality (Station Height 60m)	%		53,694	50,409	93.88	98.0	90.0	100.0	1.6
13	80m Wind Direction	°	80 m	53,694	48,147	89.67	48.3	0.0	360.0	112.4
14	80m Wind Speed	m/s	80 m	53,694	48,147	89.67	5.282	0.030	18.310	2.599
15	80m Wind Vert	m/s	80 m	53,694	48,147	89.67	-0.266	-9.040	0.500	1.025
16	Quality (Station Height 80m)	%		53,694	48,994	91.25	97.5	90.0	100.0	2.1
17	100m Wind Direction	°	100 m	53,694	43,176	80.41	51.8	0.0	360.0	110.7
18	100m Wind Speed	m/s	100 m	53,694	43,176	80.41	5.804	0.050	18.610	2.711
19	100m Wind Vert	m/s	100 m	53,694	43,176	80.41	-0.269	-9.140	0.500	0.998
20	Quality (Station Height 100m)	%		53,694	44,666	83.19	97.0	90.0	100.0	2.5
21	120m Wind Direction	°	120 m	53,694	38,645	71.97	51.2	0.0	360.0	108.9
22	120m Wind Speed	m/s	120 m	53,694	38,645	71.97	6.022	0.020	18.660	2.870
23	120m Wind Vert	m/s	120 m	53,694	38,645	71.97	-0.256	-8.880	0.500	0.924
24	Quality (Station Height 120m)	%		53,694	39,915	74.34	96.4	90.0	100.0	2.8
25	140m Wind Direction	°	140 m	53,694	33,172	61.78	58.0	0.0	360.0	108.2
26	140m Wind Speed	m/s	140 m	53,694	33,172	61.78	6.254	0.090	18.690	3.041
27	140m Wind Vert	m/s	140 m	53,694	33,172	61.78	-0.243	-8.830	0.500	0.826
28	Quality (Station Height 140m)	%		53,694	34,272	63.83	95.9	90.0	100.0	2.9
29	160m Wind Direction	°	160 m	53,694	26,555	49.46	69.7	0.0	360.0	108.9
30	160m Wind Speed	m/s	160 m	53,694	26,555	49.46	6.539	0.030	19.750	3.246
31	160m Wind Vert	m/s	160 m	53,694	26,555	49.46	-0.241	-8.800	0.500	0.740
32	Quality (Station Height 160m)	%		53,694	27,678	51.55	95.5	90.0	100.0	3.0
33	180m Wind Direction	°	180 m	53,694	20,819	38.77	83.1	0.0	360.0	108.8
34	180m Wind Speed	m/s	180 m	53,694	20,819	38.77	6.681	0.070	21.590	3.371
35	180m Wind Vert	m/s	180 m	53,694	20,819	38.77	-0.232	-8.530	0.500	0.597
36	Quality (Station Height 180m)	%		53,694	21,870	40.73	95.2	90.0	100.0	2.9
37	200m Wind Direction	°	200 m	53,694	16,279	30.32	96.4	0.0	360.0	109.4
38	200m Wind Speed	m/s	200 m	53,694	16,279	30.32	6.672	0.090	21.100	3.418
39	200m Wind Vert	m/s	200 m	53,694	16,279	30.32	-0.227	-8.020	0.500	0.463
40	Quality (Station Height 200m)	%		53,694	17,219	32.07	94.7	90.0	100.0	2.8
41	40m Wind Turbulence	m/s	40 m	53,694	35,763	66.61	0.14	0.05	1.22	0.09
42	50m Wind Turbulence	m/s	50 m	53,694	36,175	67.37	0.14	0.04	1.35	0.09
43	60m Wind Turbulence	m/s	60 m	53,694	36,885	68.69	0.14	0.04	1.42	0.10
44	80m Wind Turbulence	m/s	80 m	53,694	34,400	64.07	0.15	0.04	1.32	0.11
45	100m Wind Turbulence	m/s	100 m	53,694	33,128	61.70	0.17	0.03	1.71	0.13
46	120m Wind Turbulence	m/s	120 m	53,694	29,850	55.59	0.19	0.03	1.77	0.15
47	140m Wind Turbulence	m/s	140 m	53,694	25,975	48.38	0.21	0.03	1.52	0.16
48	160m Wind Turbulence	m/s	160 m	53,694	21,168	39.42	0.22	0.03	1.40	0.16
49	180m Wind Turbulence	m/s	180 m	53,694	16,671	31.05	0.23	0.03	1.40	0.17
50	200m Wind Turbulence	m/s	200 m	53,694	12,807	23.85	0.24	0.03	1.68	0.17
51	Turbu. Quality (Station Height 40m)	%		53,694	35,890	66.84	98.2	90.0	100.0	1.8
52	Turbu. Quality (Station Height 50m)	%		53,694	36,430	67.85	98.2	90.0	100.0	1.8

#	Label	Units	Height	Possible Data Points	Valid Data Points	Recovery Rate (%)	Mean	Min	Max	Std. Dev
53	Turbu. Quality (Station Height 60m)	%		53,694	37,231	69.34	98.2	90.0	100.0	1.8
54	Turbu. Quality (Station Height 80m)	%		53,694	34,897	64.99	97.9	90.0	100.0	2.1
55	Turbu. Quality (Station Height 100m)	%		53,694	34,073	63.46	97.3	90.0	100.0	2.5
56	Turbu. Quality (Station Height 120m)	%		53,694	30,710	57.19	96.7	90.0	100.0	2.8
57	Turbu. Quality (Station Height 140m)	%		53,694	26,777	49.87	96.2	90.0	100.0	3.0
58	Turbu. Quality (Station Height 160m)	%		53,694	21,983	40.94	95.7	90.0	100.0	3.0
59	Turbu. Quality (Station Height 180m)	%		53,694	17,462	32.52	95.3	90.0	100.0	3.0
60	Turbu. Quality (Station Height 200m)	%		53,694	13,484	25.11	94.8	90.0	100.0	2.9
61	Ambient Temp	°C	2 m	53,694	51,503	95.92	26.0	13.7	35.9	3.6
62	Barometric Pressure	mbar	2 m	53,694	51,503	95.92	1,008.8	982.6	1,097.6	4.9
63	TiltX	°		53,694	51,503	95.92	-0.3670	-0.6000	0.0000	0.0788
64	TiltY	°		53,694	51,503	95.92	0.4301	0.3000	0.7000	0.0596
65	Azimuth	°		53,694	51,503	95.92	0	0	0	0
66	Humidity	%		53,694	51,503	95.92	77.2	19.0	98.0	11.7
67	Noise Level-A	dB		53,694	51,503	95.92	13.00	5.00	18.30	2.18
68	Noise Level-B	dB		53,694	51,503	95.92	13.01	5.00	18.10	2.18
69	Noise Level-C	dB		53,694	51,503	95.92	12.98	5.00	18.20	2.18
70	PWM Power	W		53,694	51,503	95.92	1.250	0.900	2.400	0.212
71	CPU Power	W		53,694	51,503	95.92	2.348	2.100	3.000	0.123
72	Core Power	W		53,694	51,503	95.92	2.802	2.500	3.100	0.076
73	Solar Power	W		53,694	51,503	95.92	0	0	0	0
74	Modem Power	W		53,694	51,503	95.92	0.036	0.000	0.600	0.076
75	Speaker Power	W		53,694	51,503	95.92	5.13	0.10	21.80	2.99
76	CPU Temp	°C	2 m	53,694	51,503	95.92	0.0	0.0	0.0	0.0
77	Internal Temp	°C	2 m	53,694	51,503	95.92	28.9	14.2	46.7	5.9
78	Heater Temp	°C	2 m	53,694	51,503	95.92	0.0	0.0	0.0	0.0
79	Mirror Temp	°C	2 m	53,694	51,503	95.92	28.3	13.3	62.5	6.9
80	VibrationX	g		53,694	51,503	95.92	0	0	0	0
81	VibrationY	g		53,694	51,503	95.92	0	0	0	0
82	Battery	Volts		53,694	51,503	95.92	12.92	11.60	14.70	0.63
83	Beep Volume	dB		53,694	51,503	95.92	90.1	0.0	100.0	29.8
84	Air Density	kg/m ³		53,694	53,694	100.00	1.177	1.129	1.311	0.020
85	200m Wind Speed WPD	W/m ²		53,694	16,279	30.32	325	0	5,531	465
86	180m Wind Speed WPD	W/m ²		53,694	20,819	38.77	322	0	5,926	463
87	160m Wind Speed WPD	W/m ²		53,694	26,555	49.46	298	0	4,539	416
88	140m Wind Speed WPD	W/m ²		53,694	33,172	61.78	255	0	3,791	348
89	120m Wind Speed WPD	W/m ²		53,694	38,645	71.97	223	0	3,775	291
90	100m Wind Speed WPD	W/m ²		53,694	43,176	80.41	195	0	3,725	252
91	80m Wind Speed WPD	W/m ²		53,694	48,147	89.67	155	0	3,576	218
92	60m Wind Speed WPD	W/m ²		53,694	49,795	92.74	138	0	4,506	212
93	50m Wind Speed WPD	W/m ²		53,694	50,348	93.77	121	0	4,658	196
94	40m Wind Speed WPD	W/m ²		53,694	50,865	94.73	108	0	3,217	182